

OPEN·AI

# 인공지능 및 데이터시스템 AI

책임교수

배유석

참여교수

최종필

참여교수

이진호

위치

산학융합관 714호

# 주요연구분야

**반도체**

**미래차**

**Data-centric AI**

**Global R&D**

# Smart Manufacturing & Vision AI

설비이상감지

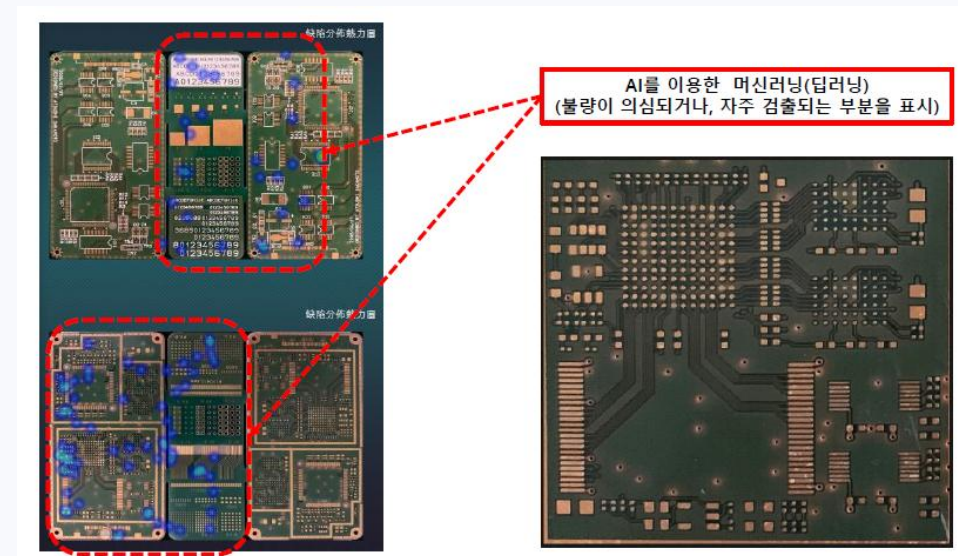
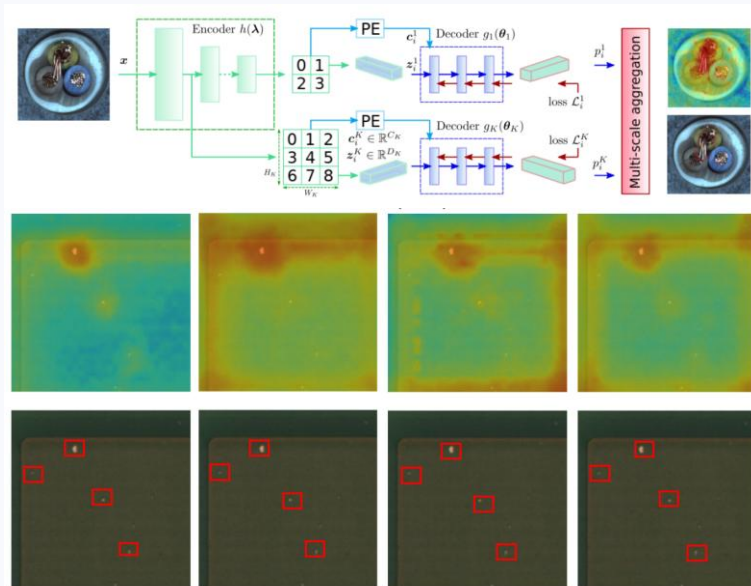
불량제품검사

제조데이터 수집·분석

Anomaly Detection

Visual Inspection

Data Annotation



연구분야 2

# Industrial Metaverse

Digital Twin

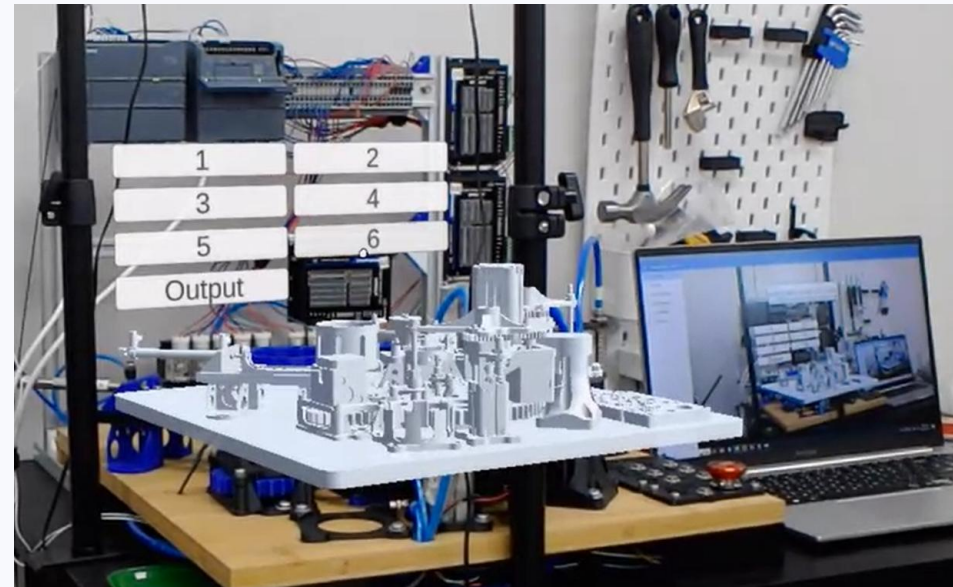
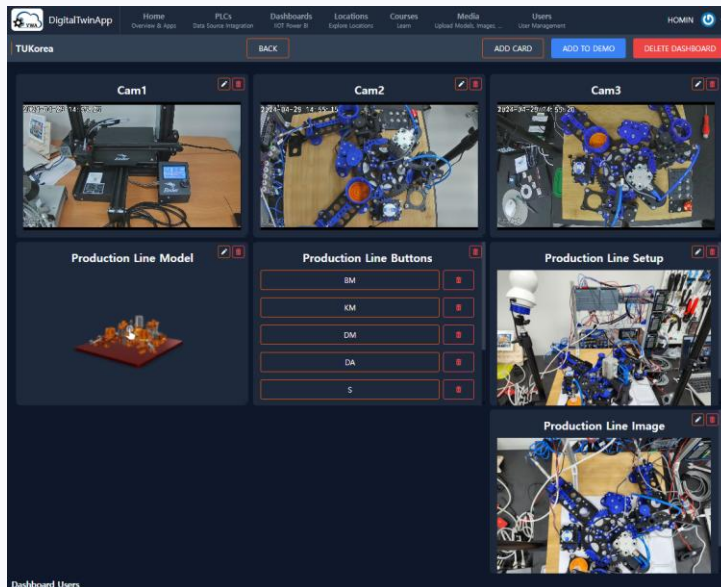
VR/AR

Remote Monitoring

3D Modeling

IoT Sensor Device

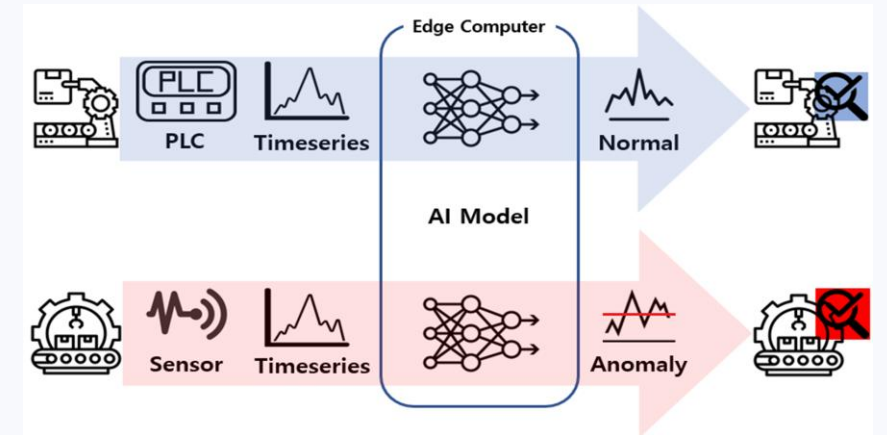
Edge Communication



# Edge AI & Data Science

## 제조 장비 공정/센서 데이터 이상 탐지

### 다중 이상 유형 분류



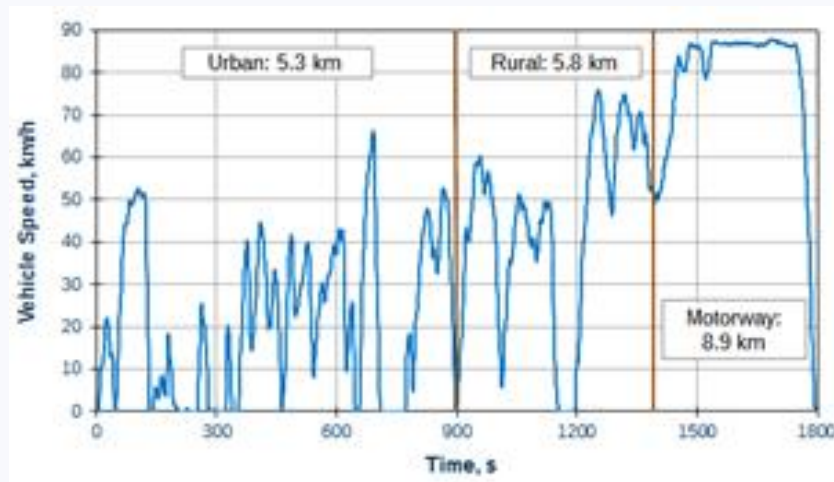
연구분야 4

# Eco-friendly Mobility

## 상용 FCEV 수소 센서 노출 환경 분석

### CAN Reverse Engineering

### 수소센서 내구 신뢰성 시험

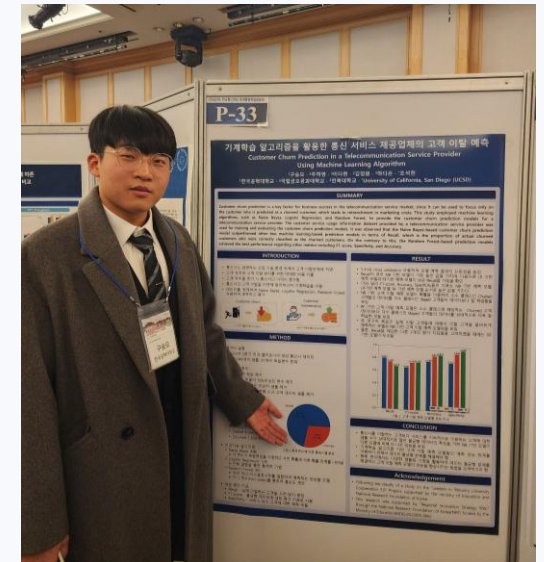
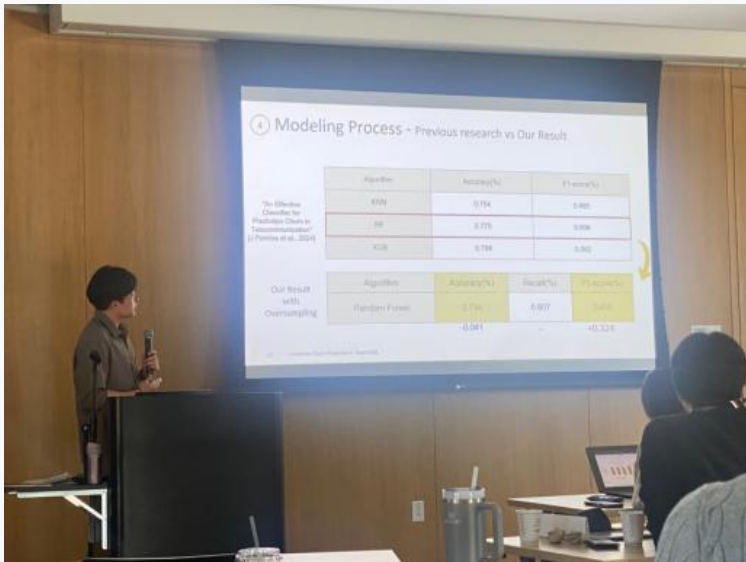
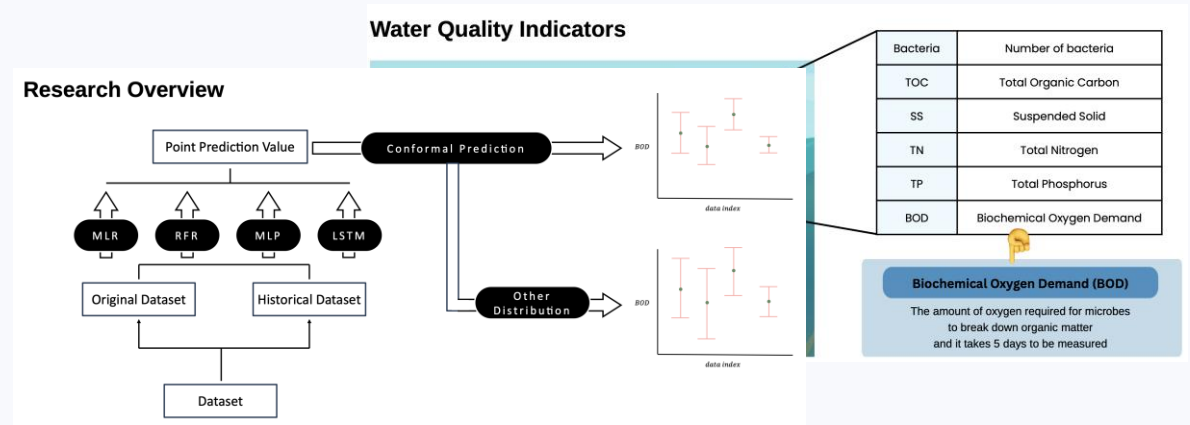


# Global AI Program

AI 역량강화 교육 프로그램

글로벌 연구원 협업

R&D 핸즈온 프로젝트



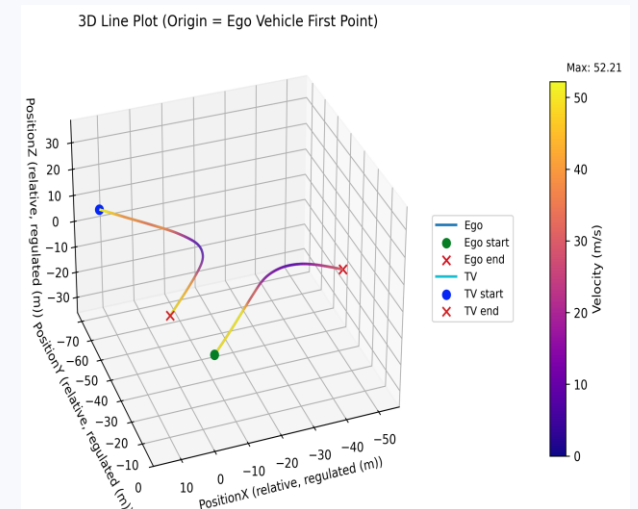
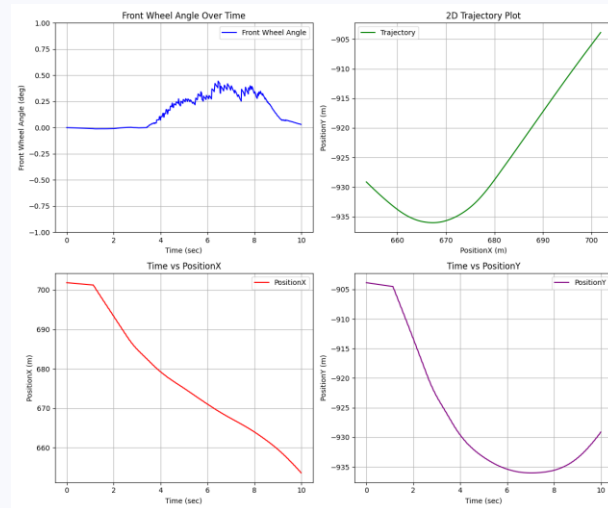
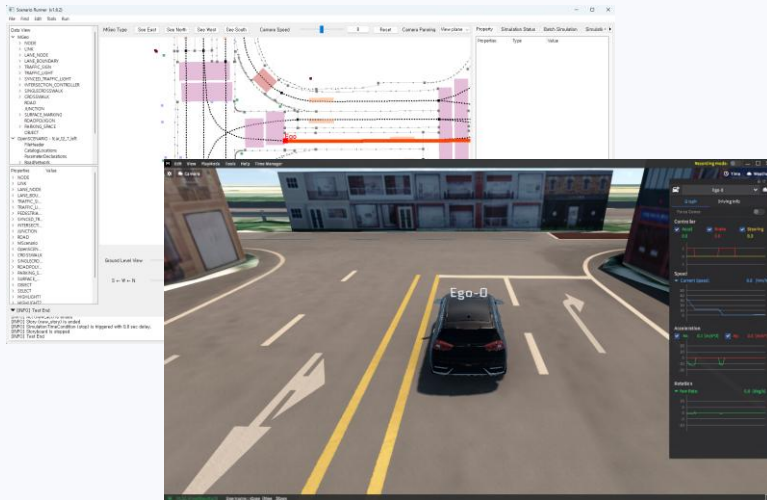
# Autonomous Driving

자율주행 차량 시뮬레이션

자율주행 영상 생성

주행 위험 분석

LLM기반 시나리오 생성



# 연구활동 지원

**글로벌 인턴십**

**데이터센터 인프라**

**연구/개발/학술/기획**

**협업도구**

**연구장비/SW/도서**

**다양한 연구경험**